



get connected to your future

**A CITYWIDE APPROACH
TO BUILDING SUSTAINABLE,
HIGH-QUALITY, OUT-OF-SCHOOL TIME
OPPORTUNITIES FOR
HIGH SCHOOL-AGED YOUTH.**

THE HUB IS THE HIGH SCHOOL INITIATIVE OF THE



USE Collective Members

AS220

College Visions

Institute for the Study & Practice of Nonviolence

New Urban Arts

Everett Dance Theater/Carriage House

PrYSM

Steel Yard

Young Voices

Youth in Action

Youth Pride, Inc.

3 Strategies

Space

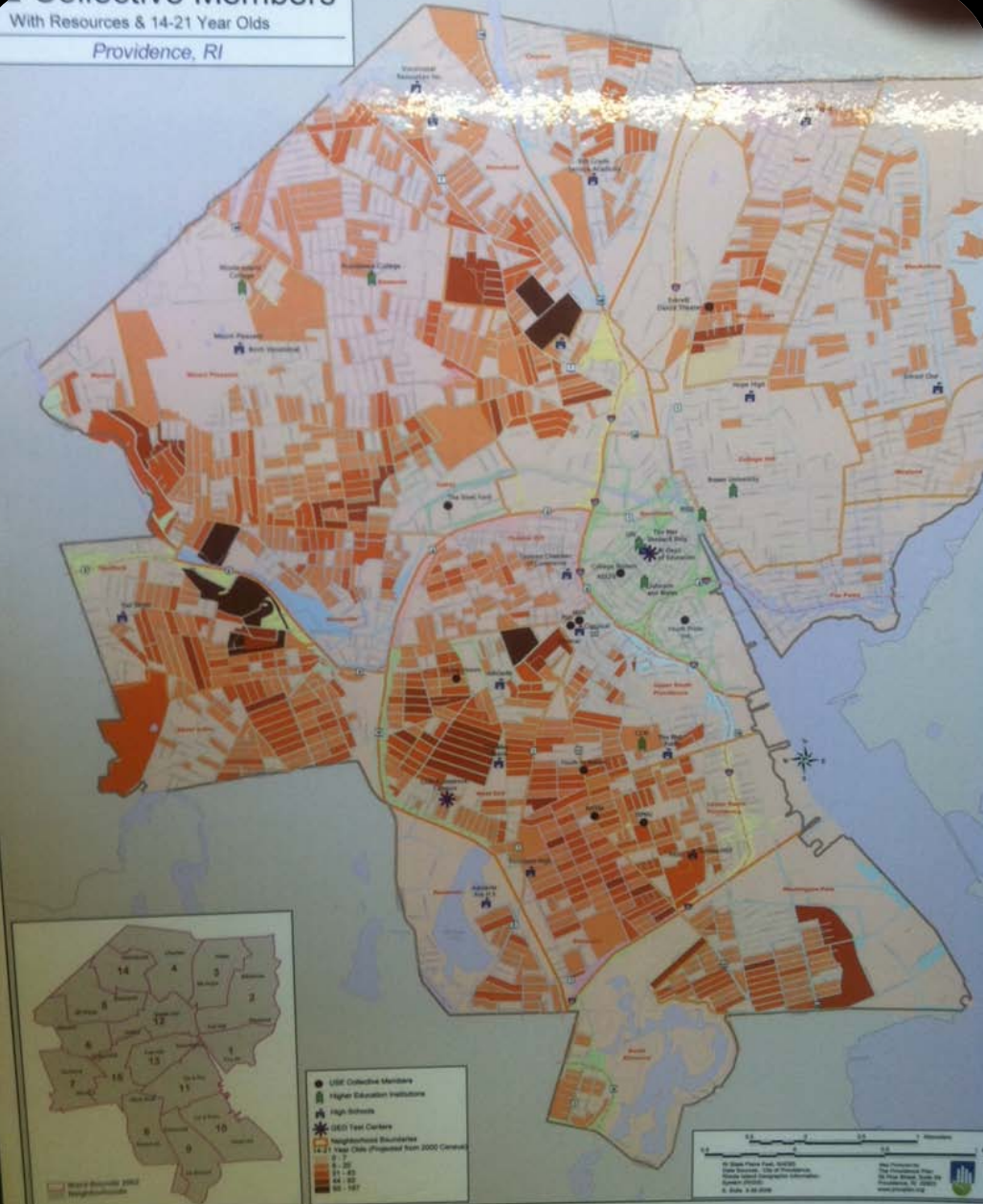
Web Tool

Policy

Collective Members

With Resources & 14-21 Year Olds

Providence, RI













Venture
Savio
Chris
Juan
Hugo
Natalia
Miguel
Jonathan
Film club
John
Andrew
EOP

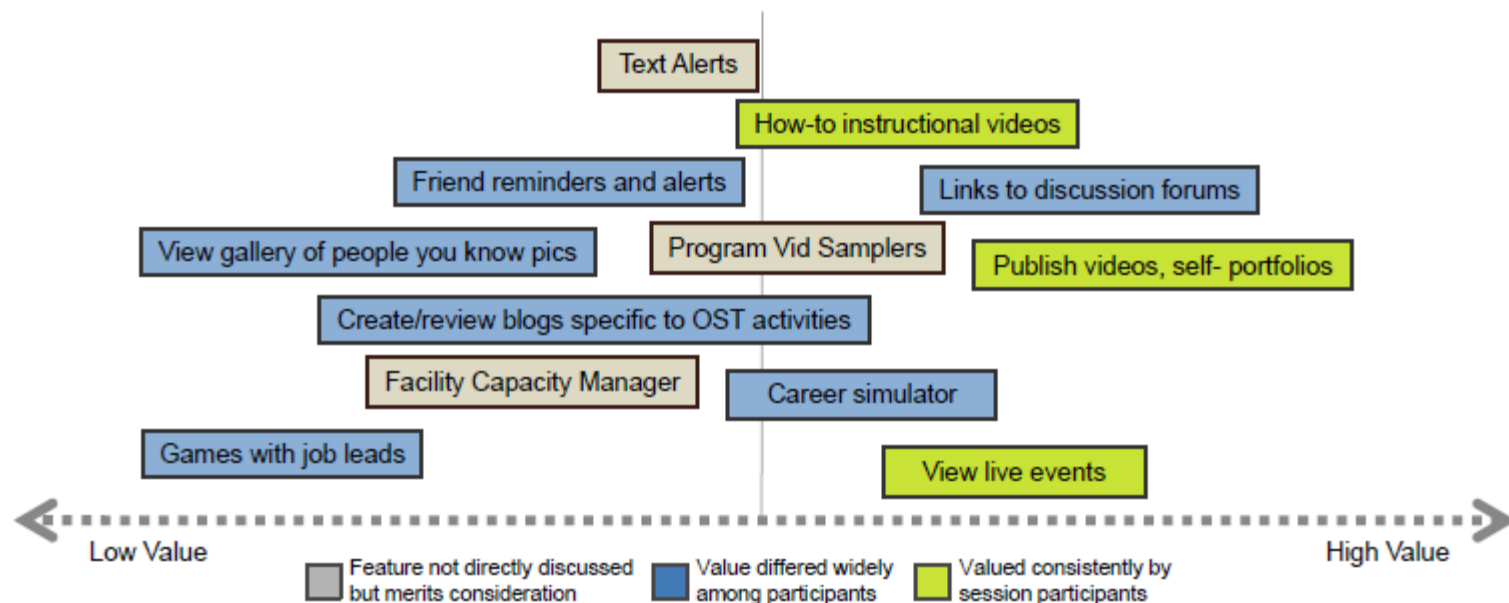


FUNCTIONAL VIEW >> CORE FUNCTIONS | SHARING VALUE

Online Benefit

Strengthens Youth-Youth, Youth-Providers relationships by delivering information via multiple channels and providing them with a platform to extend their messaging and reach.

What They Like





LOGIN

Register Contact Search



BETA

EVENTS CALENDAR PROGRAMS ORGANIZATIONS ABOUT



Louder Than a Bomb tells the story of four Chicago high school poetry teams as they prepare for the world's largest youth slam.

Friday 2/18 (RISD) - First 10 - click to register - free tickets!

Louder Than A

Youth Powered

Get Connected!

Y4C Forum

WHAT'S NOW

Fri Mar 11 @ 3:00PM - 05:00PM The Hub Drop-In

Mon Mar 14 @ 3:00PM - 05:00PM The Hub Drop-In

Tue Mar 15 @ 3:00PM - 05:00PM The Hub Drop-In

WHAT'S HOT

Applying to Art School - College Day Hub Jobs Day Hub College Day The Hub Drop-In

get involved

Activities Mapper

Search for activities based on any of the following options:

- Select Category dropdown menu with options: Programs, Events & Organizations, Events, Programs, Organizations

SEARCH

find an activity



About The Hub

"A new landscape of opportunity."

The goal of The Hub, and HubProv.com, is to serve as a marketplace where high school-aged youth can connect with all opportunities and support services and where program providers can connect to youth.

Included in this goal are four main objectives:

- Foster 21st century skills and knowledge
Improve ability of Youth to become prepared, self-actualized adults.
Ensure access via multiple touch points.
Help build the quality, diversity, and capacity of opportunities—existing and new.

HUB HOURS

Table with 2 columns: Day, Hours. Monday 3:00pm - 5:00pm, Tuesday 3:00pm - 5:00pm, Wednesday 1:00pm - 5:00pm, Thursday 3:00pm - 5:00pm, Friday 3:00pm - 5:00pm. 304 Lockwood St. 02907



@hubprov

hubprov #hubprov is hiring 4-5 high school-aged youth to be on The Hub Youth Team! http://bit.ly/askEV9 Required info sessions Mar 10&17 3-15pm.

powered by



Policy

**Graduation Credit for Expanded
Learning Opportunities**

Transportation



Expanding and enhancing school learning beyond school walls and hours for graduation credit.

Providing a model pairing afterschool, community educators with school.

What happens when a youth-driven initiative needs a logo?

National Models

New Hampshire



Ohio

- Permit credits to **count toward graduation**
- **Can't limit** number of courses or credits earned
- Allow **simultaneous credit** for:
 - Academic and career-tech
 - More than one area content
 - Secondary and post-secondary
- Permit **partial credit**
- Accept credit from other districts

PASA/PPSD Results

- **Joint Planning Process.** With PPSD/Hub leadership, principals, teachers, union reps, students and community providers, the ELO team crafted an implementation plan to provide graduation credit for learning outside of school.
- **Providing policies and a model.**
The Hub is partnering with the Providence Academy of International Affairs to provide a Web Design project for credit. Plan USA is another community partner.
- **Building tools for implementation.**
- **Received additional Nellie Mae funding.**

Gaps/Challenges

- School credit policies that are narrow in scope.
- Bridging school and community philosophies and objectives.
- Community-based rigor aligned with school standards.
- Buy-in.

Next Steps

- Assessing and learning from the model.
- Codifying the policy.
- Realistic expansion plan:
 - Inclusion of more OST partners;
 - Professional development.

New Hub Partners and Growth

- Campus Compact
- Youth 4 Change
- Reagent
- LISC
- RIPTA
- SchwaDesign
- Youth In Action
- Cutler and Company
- Brown University College Guides
- Brown University Engineers Without Borders
- PPSD
- Generation Citizen
- Providence College
- BearPaw Tutors
- Bryant University
- Johnson and Wales
- Rhode Island College
- RISD
- MAKE Magazine
- LeftBrain
- Rhode Island Environmental Justice League
- Ashoka's Youth Venture
- Juanita Sanchez Educational Complex
- And many individual mentors including music producers, graphic designers, film-makers, entrepreneurs and more!

The Hub Advisory Council

- **Carrie Bridges**
- RI Department of Health
- **Maryellen Butke**
- RI-CAN
- **Joseph Cammarano**
- Providence College
- **Beth Cunha**
- Travelling Theater
- **Andy Cutler**
- Cutler and Company
- **Jim DeRentis**
- Banking
- **Alexis Devine**
- Lifespan
- **Victoria Ferrara**
- RI Foster Parents Association
- **Margaret Holland-McDuff**
- Family Service RI
- **Lori Norris**
- RI Department of Labor & Training
- **Nkoli Onye**
- Providence School Department
- **Paige Parks**
- Youth 4 Change
- **Amy Pettine**
- RIPTA
- **Sarah Meyer**
- New Urban Arts
- **Barbara Fields**
- LISC
- **Stephanie Federico**
- PPSD

More to come...